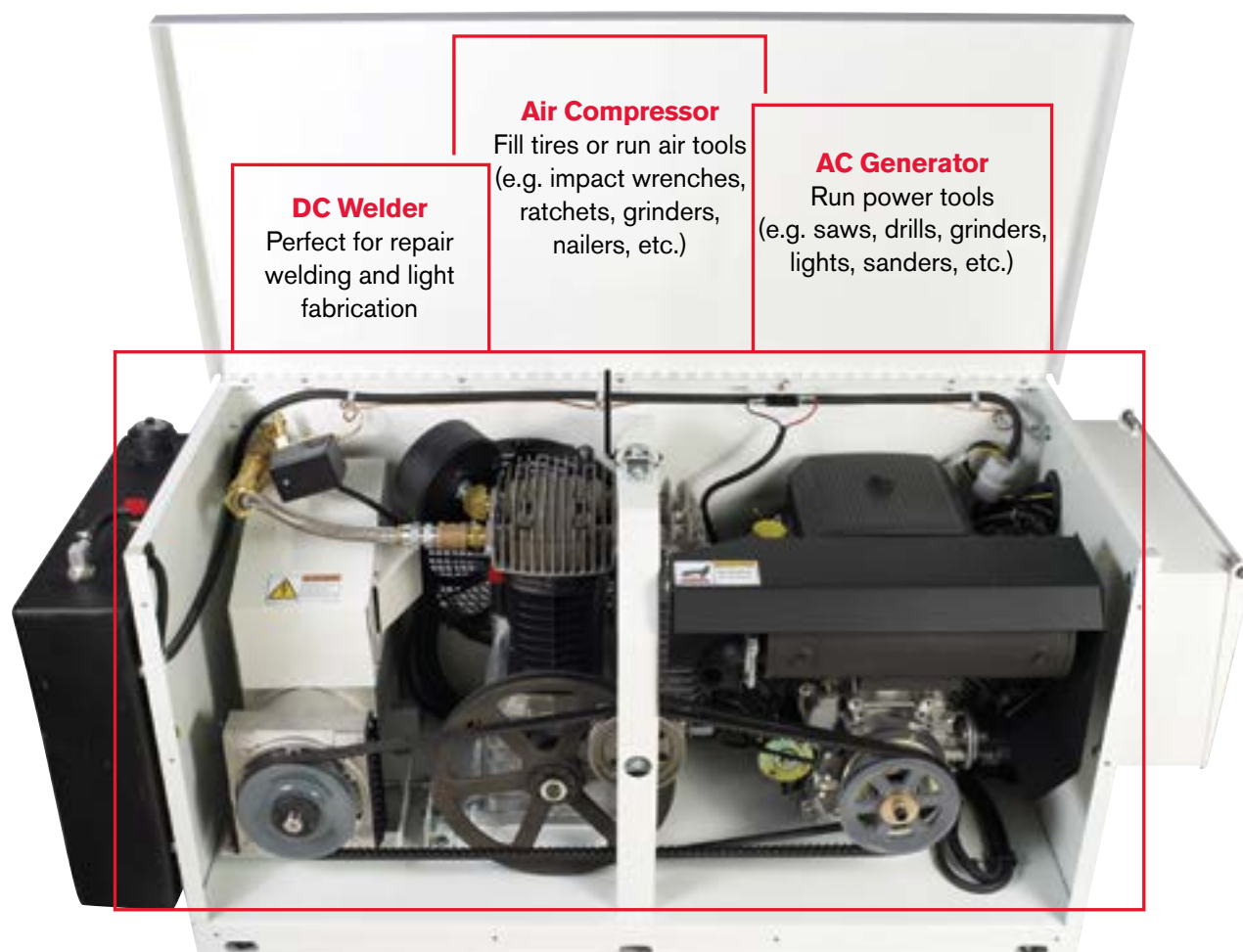


THE POWER CENTERS

GOODALL POWER CENTERS (GPC) ARE ALL-IN-ONE, MULTI-FUNCTION PRODUCTS DESIGNED TO MEET THE NEEDS OF TODAY'S MOBILE SERVICE MECHANICS. THESE UNITS ARE ENGINEERED TO REDUCE THE AMOUNT OF SPACE NECESSARY TO FIT IN MOST SERVICE VEHICLES (BY 50% IN MANY CASES, AND REDUCING WEIGHT BY 30% TO COMPARABLE SEPARATE COMPONENTS). IF YOU ARE A FIELD SERVICE MECHANIC, THE GOODALL POWER CENTER IS YOUR ANSWER TO ON-DEMAND MOBILE POWER.



Air Compressor

Fill tires or run air tools
(e.g. impact wrenches,
ratchets, grinders,
nailers, etc.)

DC Welder

Perfect for repair
welding and light
fabrication

AC Generator

Run power tools
(e.g. saws, drills, grinders,
lights, sanders, etc.)



"THE GOODALL POWER CENTER IS ONE OF THE BEST TOOLS WE HAVE. AS A SUPERINTENDENT OF A PUBLIC WORKS DIVISION, I NEED TO DO MORE WITH LESS. THE GOODALL UNIT GIVES ME THE ABILITY TO DO THAT. NO MORE TOWING A COMPRESSOR OR WELDER. THE UNIT TAKES UP THE SPACE THAT A NORMAL-SIZED WELDING UNIT WOULD, BUT IT INCLUDES AN AC GEN-SET AND A COMPRESSOR. THANKS FOR BUILDING A GREAT TOOL THAT IS VIRTUALLY TROUBLE FREE AND VERY LOW MAINTENANCE TOO!"

—JOE TAGLIABOSCHI, YOLO COUNTY



1000 SERIES: POWERFUL, OPEN-AIR, 3-IN-1 POWER CENTERS

Available as a complete tank-mount unit or as a base-mount unit with remote air tank, the 1000 Series is a downtime destroyer. Up to 8,500 watt AC generator, 16-29 CFM compressor and DC stick welder make this compact unit a must-have for the on-the-go mobile service technician. And the open-air design make parts easily accessible for maintenance and repair.



2000 SERIES: VERSATILE, ENCLOSED, 3-IN-1 POWER CENTERS

Take multiple components for multiple service functions, put them in one box, from one manufacturer, and you have the 2000 Series Power Centers. Gas or hydraulically powered, these mobile work stations give you DC stick welding power, up to 5000 watts of AC power and up to 24 CFM air power to keep you on the job and in the field.



5000 SERIES: THE ULTIMATE MOBILE SERVICE CENTER

Add jump starting to our already feature-rich line of Power Centers and you have the only product in the market that provides true 4-in-1 mobile service tech capabilities. Powerful 12/24 volt jump starting, a 23 CFM air compressor, DC stick welding, and up to 5,000 watts of AC power to provide you with all the features and function to get the job done anytime, anywhere.



4-IN-1 POWER CENTER

05-100



GENERAL FEATURES

Engine

- Electric start, air cooled Kohler Command OHV V-Twin
- Includes 6 gal. EPA compliant side mount fuel tank (removable)
- For CARB-compliant unit, contact customer service

DC Welding

- DC Stick, 250 amp
- 25' 1/0 gauge welding cables included

AC Power

- 5,000 watt (while not welding)
- Synchronous, brushless AC generator
- Outlets: 1 - 120 volt, 20 amp duplex, 1 - 120 volt, 30 amp twist lock, 1 - 240 volt, 20 amp twist lock

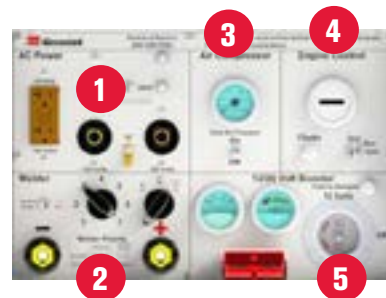
Air Power (Air tank required, sold separately. See options on page 23.)

- 23 CFM rated at 100 psi, 150 psi max.
- Air gauge on control panel monitors air tank pressure

Jump Starting

- 12 volt, 700 amp; 24 volt, 400 amp
- 30' 1/0 ga. welding cable allows flexibility and ease of use
- 1,000 amp full-power clamps allow higher amperage flow
- Voltage Control provides regulated voltage that is safe for vehicles and on-board electronics
- Reverse Current Shutdown Protection protects against expensive repairs to the GPC if the unit runs out of gas
- Reverse Polarity Protection will not allow the GPC to be turned on if the cables are not hooked up correctly
- Polarity and low battery LED indicators confirm proper connections
- Antizap surge protection provides safer boosting

THE GPC 5100 IS THE WORKHORSE OF THE POWER CENTER LINE. IT'S A 4-IN-1 SYSTEM THAT COMBINES AC GENERATOR, AIR COMPRESSOR, WELDER AND START-ALL® JUMP STARTING SYSTEM ALL IN ONE EASY-TO-INSTALL PACKAGE.



Control Panel

- Removable control box feature for easy remote mounting
- Requires extension harness for distances beyond 12"
- Control Box Dimensions: 18" W x 6" D x 12" H, bottom of unit to bottom to control box is 12"
- Easy access to all control functions:
 - 1) AC power outlets
 - 2) Welding controls and ports
 - 3) Air compressor controls and gauge
 - 4) Engine controls and hour meter
 - 5) Jump starting controls with quick plug connector

Installation

- Compact and clean installation
- Installation time is reduced and simplified with easy bolt-in packages (compared with separate components)



JUMP STARTING



WELDING



AIR POWER



AC POWER

CHOOSE YOUR POWER: DETERMINING YOUR OUTPUT NEEDS (SEE GUIDE ON PG. 5)

JUMP STARTING	05-100 & 05-100-6
SPEED (TIME TO START)	<p>SLOWER ← → FASTER</p>
STARTS (NUMBER OF STARTS)	<p>FEW ← → MANY</p>
SPEND (AVG. COST PER UNIT)	<p>\$ ← → \$\$\$\$</p>

5100 SERIES OPTIONS & ACCESSORIES

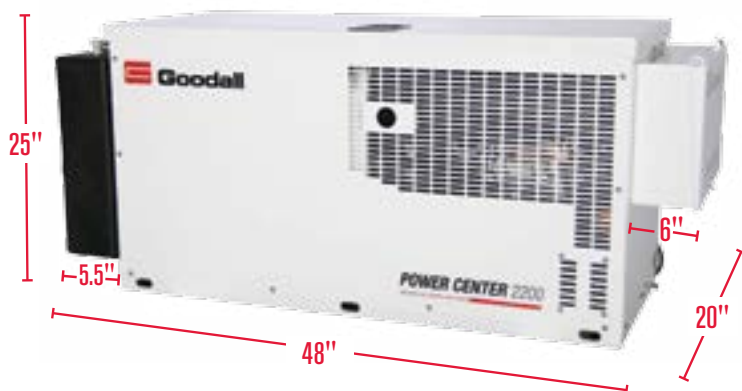
- 950-087** 6' Control Panel Harness
- 950-088** 12' Control Panel Harness
- 950-153** 18' Control Panel Harness
- 350-087** 50' Welding Cable Upgrade
- 450-044** 50' Boosting Cable Upgrade
- 550-056** 30 CFM Air Compressor Upgrade
- 61-130** 30 gal. Vertical Mount Air Tank
- 61-131** 30 gal. Horizontal Mount Air Tank
- 50-443** 12 gal. Horizontal Mount Air Tank

SPECIFICATIONS

POWER CENTER	05-100	05-100-6
ENGINE	Electric Start, Kohler Command OHV V-Twin	Electric Start, Kohler Command OHV V-Twin
JUMP STARTING	12/24 volt, 700/400 amp	12/24 volt, 700/400 amp
WELDING OUTPUT	250 amp	N/A
AC OUTPUT	120 volt, 5000 watt, 60 Hz	120 volt, 5000 watt, 60 Hz
CFM @ 100 PSI	23	23
CABLES	30' 1/0 ga. Jump Starting Cables / 25' 1/0 ga. Welding Cables	30' 1/0 ga. Jump Starting Cables / 25' 1/0 ga. Welding Cables
CLAMPS	1,000 amp Full Power	1,000 amp Full Power
DIMENSIONS	38" W x 55" D x 27" H 850 lbs.	38" W x 55" D x 27" H 850 lbs.

3-IN-1 POWER CENTER

02-200



GENERAL FEATURES

Engine

- Electric start, air-cooled Kohler Command OHV V-Twin
- Includes 8 gal. EPA-certified fuel tank (removable)
- For CARB compliance contact customer service
- Optional hydraulically powered unit available

DC Welding

- DC Stick 250 amp
- 25' 1/0 gauge welding cables included

AC Power

- 5,000 watt, 60 hz (while not welding)
- Outlets: one 120 volt, 20 amp duplex outlet; one 120 volt, 30 amp twist lock outlet; one 240 volt, 20 amp twist lock outlet

Air Power

- 2-stage 24 CFM @ 100 psi, 150 psi max.
- Air gauge on control panels monitors air tank pressure (Air tank required, sold separately. See options below.)

NOT SURE HOW TO FIT MULTIPLE PIECES OF EQUIPMENT ON YOUR SERVICE VEHICLE AND HAVE ANY LOAD CARRYING CAPACITY LEFT? AIR COMPRESSOR? WELDING? AC POWER? HOW ABOUT A 3-IN-1 COMPACT WORKHORSE UNIT? GOODALL POWER CENTERS DELIVER SPACE-SAVING POWER FOR SERVICE VEHICLES TO GET YOUR REPAIR WORK DONE QUICKLY AND EFFICIENTLY.

02-500
HYDRAULIC POWERED



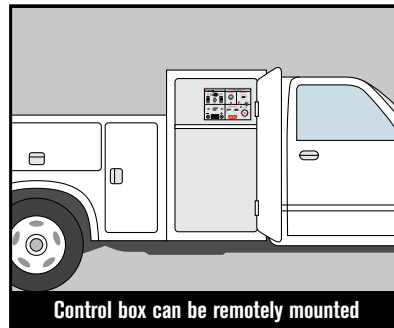
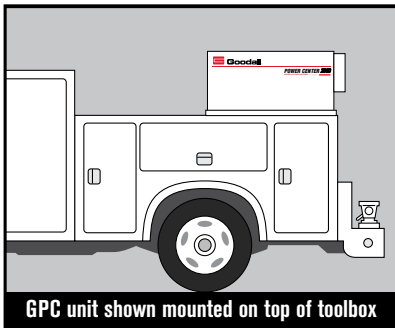
OPTIONS & ACCESSORIES

Goodall Power Center 2200:

- 950-080** 6' Control Panel Harness
- 950-081** 12' Control Panel Harness
- 950-155** 18' Control Panel Harness

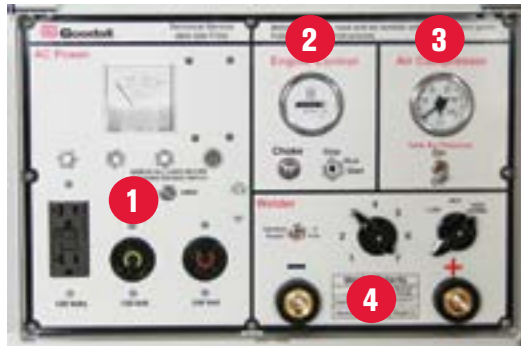
- 350-087** 50' Welding Cable Upgrade
- 61-130** 30 gal. Vertical Mount Air Tank
- 61-131** 30 gal. Horizontal Mount Air Tank

- 50-443** 12 gal. Horizontal Mount Air Tank
- 990-200** Factory-Installed Stand and 30 gal. Air Tank Kit



Installation

- Compact, easy installation in less time with simple bolt-in packages
- Center-point lift included for easy installation
- Standard remote mount control box
- GPC can be mounted on top of toolbox with the control box remotely mounted in a side compartment.



Control Panel

- Removable control box feature for easy remote mounting
- Requires extension harness for distances beyond 12"
- Control Box Dimensions: 18" W x 6" D x 12" H, bottom of unit to bottom to control box is 12"
- Easy access to all control functions:
 1. AC power outlets
 2. Engine controls and hour meter
 3. Air compressor controls and gauge
 4. Welding controls and ports

SPECIFICATIONS

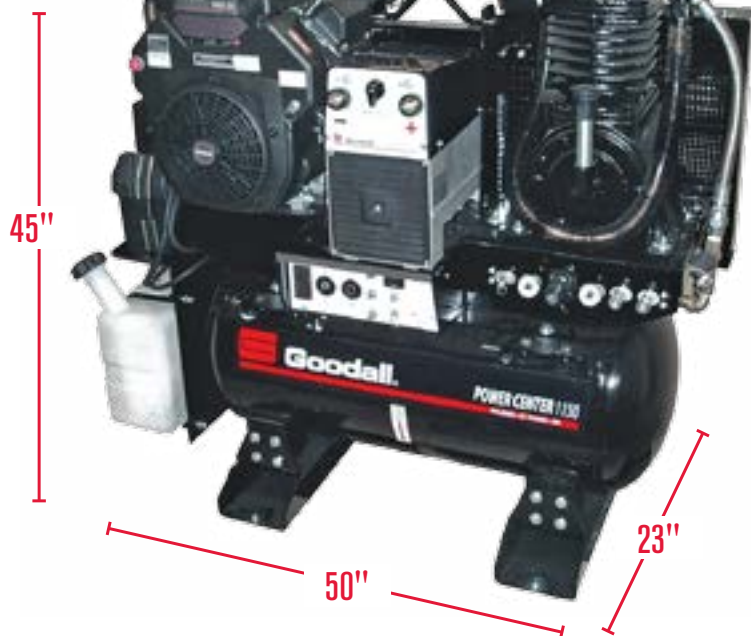
POWER CENTER	02-200*	02-500**
ENGINE	Electric Start, Kohler Command OHV V-Twin	10 GPM @ 2500 psi - 15 GPM @ 3000 psi tandem pump
WELDING OUTPUT	250 amp	250 amp
AC OUTPUT	120/240 volt, 5,000 watt, 60 hz	120/240 volt, 6,000 watt, 60 hz
CFM @ 100 PSI	24	24
CABLES	25' 1/0 ga. Welding Cables	25' 1/0 ga. Welding Cables
DIMENSIONS	20" W x 48" D x 25" H 625 lbs.	20" W x 48" D x 25" H 545 lbs.

*Equipped with auto-idle feature.

**35 gal. (minimum) hydraulic tank, requires (2) 3/4" pressure lines (minimum), 1" return hose (minimum); 12' control panel harness standard

1000 SERIES POWER CENTERS

01-150



WHEN IT COMES TO OUR 1000 SERIES POWER CENTERS, THERE ARE SEVERAL OPTIONS. BASED ON YOUR LOAD NEEDS, DECIDE HOW MUCH POWER YOU NEED, AND YOU'VE FOUND THE BEST POWER CENTER FOR YOU.



*Shown with optional remote control box.
Available on 01-150.*

GENERAL FEATURES

Engine

- Electric start, air cooled Kohler Command OHV V-Twin or Subaru OHC

AC Power

- 4,000 to 8,500 watt, 60 hz
- 110/220 volt, 60 hz

Air Power

- 2 stage from 16.3 to 29 CFM @ 100 psi, 150-175 psi max.
- 30 gallon storage tank

OPTIONAL REMOTE CONTROL BOX

- 190-007** Remote Control Box Assembly 1150, 6'
- 190-007-12** Remote Control Box Assembly 1150, 12'



Easy access to all control functions:

1. AC power outlets
2. Engine controls and hour meter
3. Air compressor controls and gauge
4. Welding controls and ports



01-105

01-090

01-095

01-098



SPECIFICATIONS

POWER CENTER	01-090	01-095 / 01-095-B*	01-098
POWER SOURCE	Subaru OHC with 1.85 gal. Fuel Tank	Kohler Command OHV V-Twin with 5 gal. Fuel Tank, with Auto Idle	Air Cooled Kohler Command OHV V-Twin with 5 gal. Fuel Tank, with Auto Idle
AC OUTPUT	110/220 volt, 4,000 watt, 60 hz	110/220 volt, 8,500 watt, 60 hz	110/220 volt, 8,500 watt, 60 hz
CFM @ 100 PSI	16.3	16.3	29
DIMENSIONS	49" L x 23" W x 44" H, 512 lbs.	50" L x 23" W x 45" H, 600 lbs.	50" L x 23" W x 45" H, 625 lbs.

POWER CENTER	01-105	01-150 / 01-150-B*
POWER SOURCE	Subaru OHC with 1.85 gal. Fuel Tank, with Auto Idle	Air Cooled Kohler Command OHV V-Twin with 5 gal. Fuel Tank, with Auto Idle
CABLES	—	25' 1/0 ga. Welding Cables
WELDING OUTPUT	170 amp	250 amp
AC OUTPUT	110/220 volt, 3,500 watt, 60 hz	110/220 volt, 5,000 watt, 60 hz
CFM @ 100 PSI	16.3	29
DIMENSIONS	49" L x 23" W x 47" H, 600 lbs.	50" L x 23" W x 45" H, 675 lbs.

*Also available as base mount without air tank. Call for specifications.